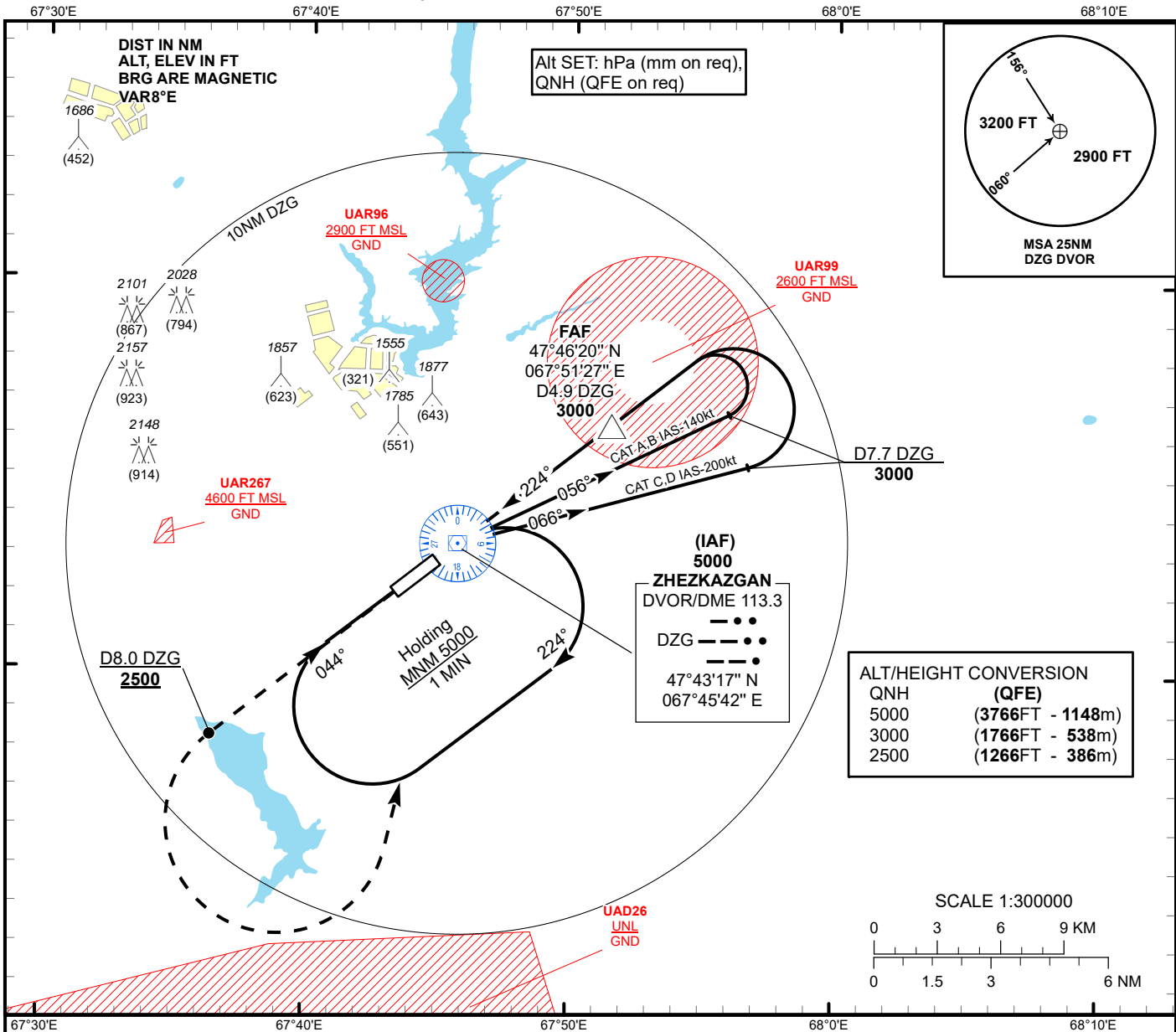


INSTRUMENT
APPROACH
CHART - ICAO

AERODROME ELEV 1251 FT
HEIGHTS RELATED TO
THR RWY 22 ELEV 1234 FT

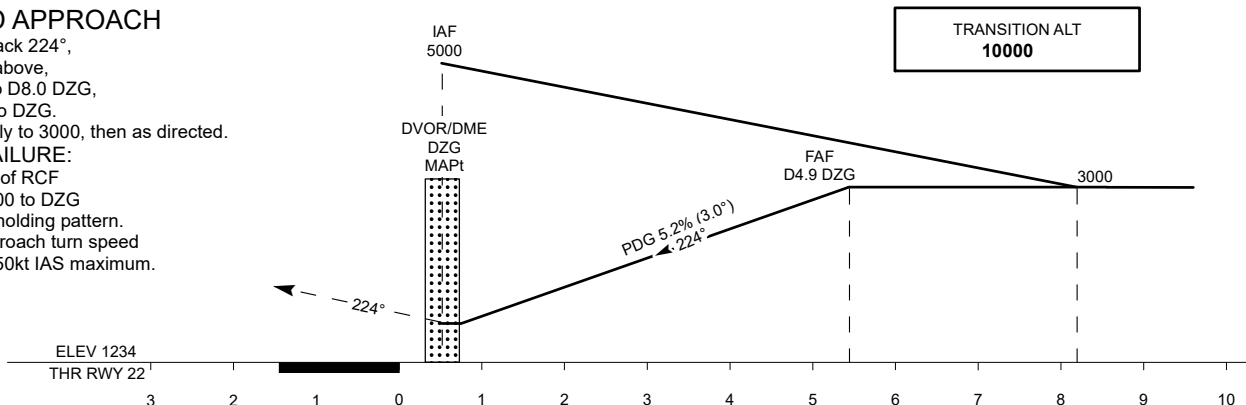
ZHEZKAZGAN TOWER 127.1
ZHEZKAZGAN ATIS (EN) 131.4
ZHEZKAZGAN ATIS (RU) 122.4

ZHEZKAZGAN
VOR/DME Z
RWY 22



MISSED APPROACH

Climb on track 224°, at 2500 or above, outbound to D8.0 DZG, turn LEFT to DZG. Climb initially to 3000, then as directed.
RADIO FAILURE:
In the case of RCF climb to 5000 to DZG and join to holding pattern. Missed approach turn speed limited to 250kt IAS maximum.



Aircraft Category		A	B	C	D	DIST THR	5.4	5	4	3	2	1
Straight-in Approach OCA/H						DME DZG	4.9	4.5	3.5	2.5	1.5	0.5
	VOR/DME	1500(270)	1500(270)	1500(270)	1500(270)	ALTITUDE	3000	2875	2577	2238	1920	1601
						HEIGHT	1766	1641	1323	1004	686	367

Aerodrome Operating Minima (MDH ft x RVR(CMV))	VOR/DME					GS	Kt	80	100	120	140	160	180
						FAF-MAPt 4.9NM	min:sec	3:40	2:56	2:27	2:06	1:50	1:38
						Rate of descent(5.2%)	ft/min	420	530	640	740	850	960

CHANGE: MSA, obstacles, add ATIS.

ZHEZKAZGAN
VOR/DME Z

AERONAUTICAL DATA TABULATION

VOR approach to RWY22 from DVOR/DME DZG	
Fix/point	Coordinates
(IAF) DVOR/DME DZG	47° 43' 17.1"N 067° 45' 41.7"E
(FAF) D4.9 DZG	47° 46' 20.1"N 067° 51' 27.1"E
THR RWY 22	47° 42' 58.68"N 067° 45' 07.14"E
Final approach descent angle is 3°	